

Understanding Today's Marijuana: Implications for our Youth



Addiction is Big Business and they have a Great Plan

There are 260 million adults in the US.

About 10% of Adults report being in recovery	26.0 Million
Nicotine Dependence (NIH)	23.6 Million
Alcohol (Represents 75% of SUDs. The 2017 NESARC Survey indicated that 12.7 percent of adults fit the criteria for alcoholism.)	33.0 Million
Marijuana/Opioids/Cocaine/Heroin/Meth	10.0 Million

The Addiction for Profit Business Model has 3 Parts

1. Make the product as addictive as possible
2. Market it as safe, if not medicinal
3. Target Youth

See Tobacco Company Quotes on Marketing to Kids

Marijuana Talking Points Create the Myth

1. It's just a plant.
2. It's medicine.
3. It's safer than alcohol.
4. No one has ever died.

MARINOL

linked to

Serious Adverse
Reactions



FDA WARNING

AUG 28, 2017

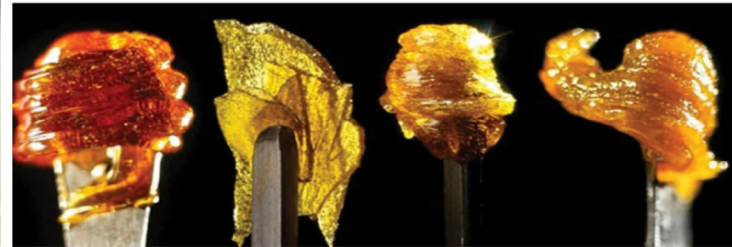
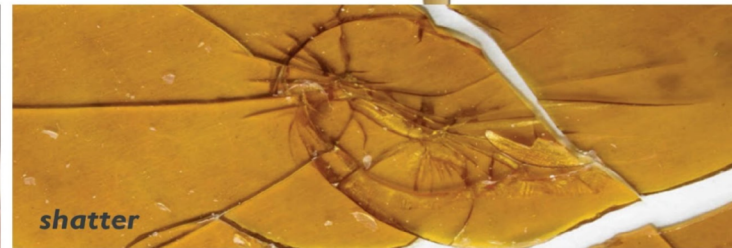


Let's Compare 800mg Vape Pen to Max Dose of Marinol

Daily Use Chart:

- A Vape Pen has about 150 Puffs
- 20 puffs/day is 107mg or 10 times the Recommended Dose

(One-week supply)



How Addictive Is Marijuana?

Nora Volkow is the Director of the National Institute of Drug Abuse

50% Addiction Rate For Daily Users

Her Study Published in JAMA Pediatrics Jun 1, 2021; 175(6): 640-643

**3 Year Addiction Rate for 12 to 17 Year Olds
Who Started With Marijuana Was Twice As High
As Compared To Youth Who Started With
Opiates**

Does Marijuana Lead to Use of Other Drugs?

CDC 2019 Youth Risk Behavioral Study

Marijuana use was the # 1 predictor of whether teens also abused opiates in the past month.

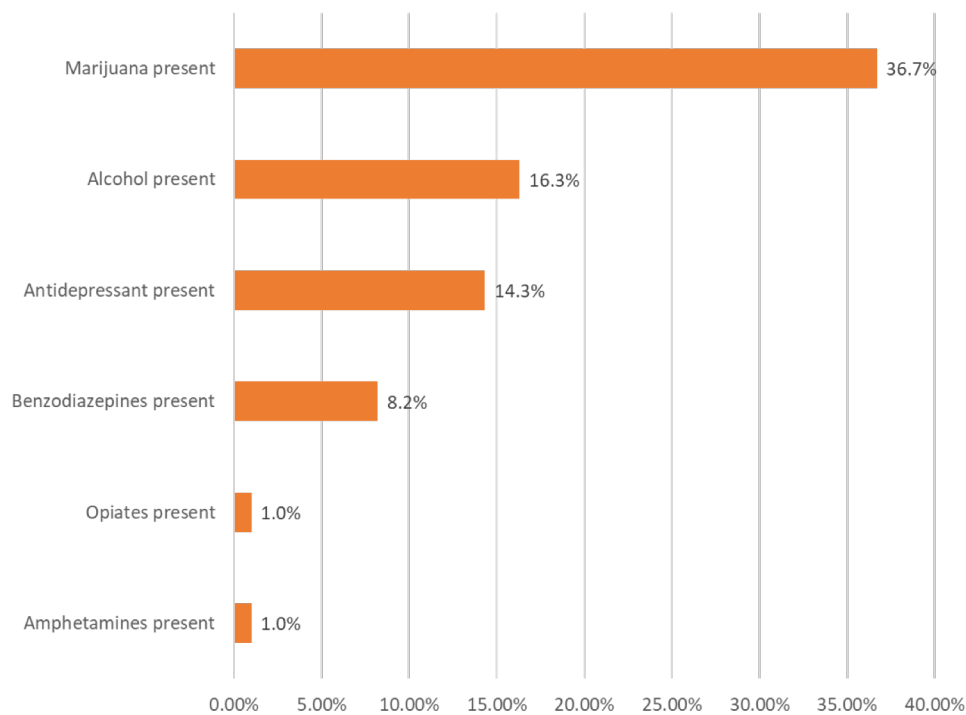
Dr. Kevin Sabet, president of Smart Approaches to Marijuana (SAM) and a former three-time White House drug policy advisor said, “This survey confirms a trend we have been noticing: every other drug among young people is going down with the exception of marijuana...we have to understand that drug use does not happen in a vacuum – co-use is a real phenomenon.”

Can Marijuana Cause Mental Illness & Psychosis?

In 2017, the National Academy of Medicine reviewed 30 years of research and concluded:

“...the association between cannabis use and development of a psychotic disorder is supported by data synthesized in several good-quality reviews. The magnitude of this association is moderate to large and appears to be dose dependent.”

THC IS THE NUMBER ONE DRUG FOUND IN 69 TEENS, age 15-19, WHO DIED BY SUICIDE in Colorado in 2018



Colorado's teen suicide rate increased 58% from 2016-2019, the highest increase in the country

United Health Foundation

Colorado Public Health and Environment, Colorado Violent Death Reporting System, 2019



A Review of Cases of Marijuana and Violence

Miller NS et al. Int. J. Environ. Res. Public Health 2020, 17, 1578

1. Marijuana use causes violent behavior through increased aggressiveness, paranoia, and personality changes (more suspicious, aggressive, and anger).
2. Recent illicit and “medical marijuana” is of much higher potency and more likely to cause violent behavior.
3. Marijuana use and its adverse effects should be considered in cases of acts of violence as its role is properly assigned to its high association.
4. Recognize that high potency marijuana is a predictable and preventable cause of tragic violent consequences.

Table 4. What did the cases have in common?

Cases of Marijuana Use and Symptoms	
Case	Symptom
Anthony Comello	Paranoia
Man in Rustavi	Aggressiveness, Personality Change
Nikolas Cruz	Psychosis, Hallucinations
Devin Patrick Kelley	Aggressiveness, Personality Change
Salaman Abedi	Aggressiveness, Personality Change, Paranoia
Richard Rojas	Paranoia, Hallucinations
Arcan Cetin	Aggressiveness, Personality Change
Stoshi Uematsu	Psychosis, Paranoia
Robert Dear	Aggressiveness, Paranoia
M.Y. Abdulazeez	Aggressiveness, Paranoia
Dylan Roof	Paranoia, Hallucinations
Michael Brown	Aggressiveness, Personality Change, Paranoia
Dzhokar Tsarnaev	Aggressiveness, Personality Change
Tamerlan Tsarnaev	Aggressiveness, Personality Change
Jared Loughner	Paranoia, Psychosis



2021 Maine Marijuana Sales

Medical Marijuana (June 2022 MaineBiz)	\$ 374.0 Million
Recreational (June 2022 MaineBiz)	\$ 120.0 Million
Black Market (Maine Policy Survey)	\$ 280.0 Million
Total Maine Marijuana 2021	\$ 774.0 Million

Point of Reference

2021 Maine Lobster Sales \$725 million

How Much Marijuana Use Is A Lot?

Most Countries Use Less Than 10% Per Capita

Chile	38%
Canada	27%
Israel	27%
US	16%
Maine	41%
	Half Use Every Day
	66% of Teens Think It's Safe

MaineHealth Emergency Room Visits: (12)

Due to Adverse Impact of Ingesting Marijuana

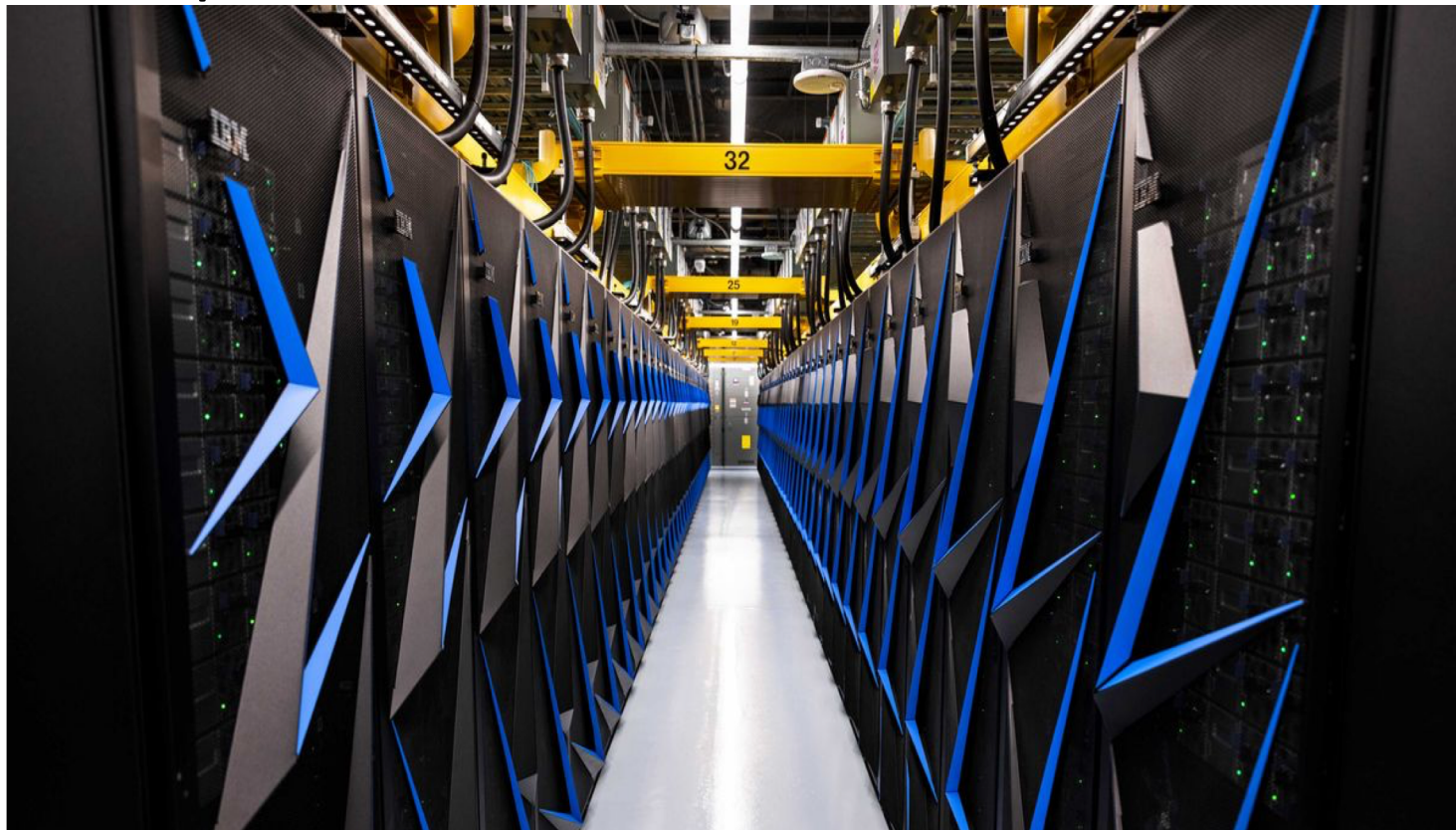
2022 ER Visits	5,258 All Ages
Visits by Under Age 18	1,358 26%
Increase Over 2021	53%

What Do Maine Leaders Think About Marijuana?

On 1/9/23, Maine's Director for the Office of Cannabis Policy was quoted in the PPH, he stated that regarding marijuana revenue in Maine, it:

- *“reflects the significant economic impact that legal cannabis continues to have in the communities that have opted into the system.”*
- *“The system is creating jobs, helping revitalize communities, and having a positive economic impact on businesses that help the industry function.”*
- *“More communities are recognizing this potential and are leaving behind outdated stigma about this industry.”*

IBM's Summit, World's Most Powerful Supercomputer





"Sorta makes you want to treat me with more respect, doesn't it!"

Thank You!



visit us at seedmaine.org